

# FLOOR PLAN

## 1ST FLOOR

● DUPLEX 1 BEDROOM | 49.5 SQ.M.



# FLOOR PLAN

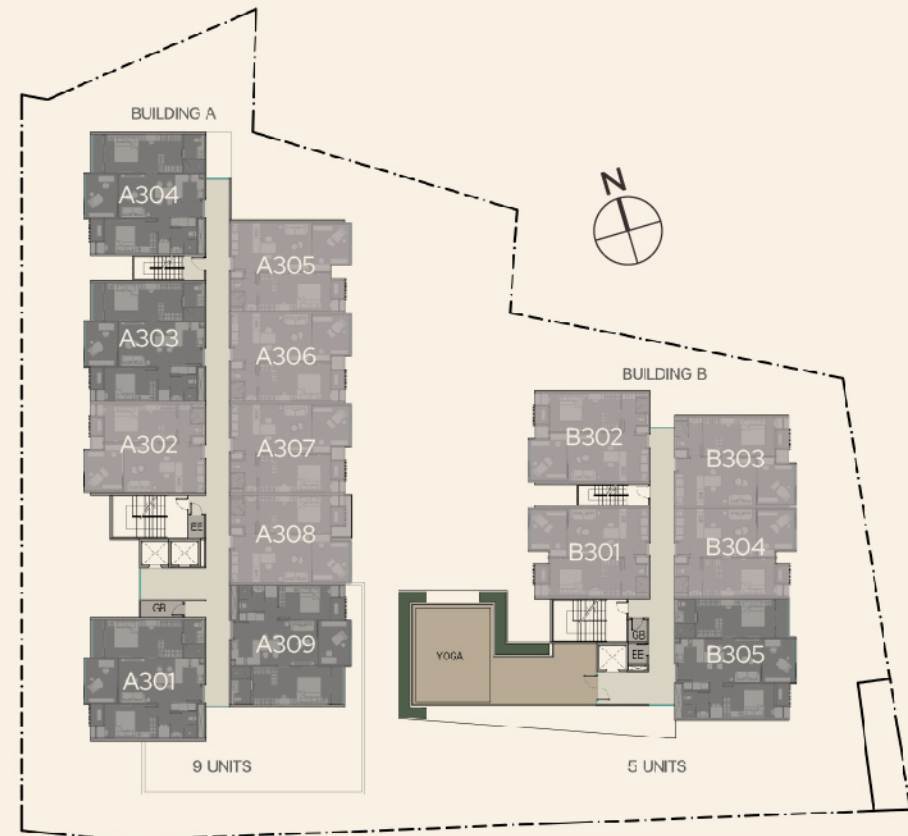
## 2ND FLOOR

- 1 BEDROOM | 56 SQ.M.
- 1 BEDROOM PLUS | 57 SQ.M.
- 2 BEDROOM | 74 SQ.M.
- 2 BEDROOM PLUS | 76 SQ.M.



## 3RD FLOOR

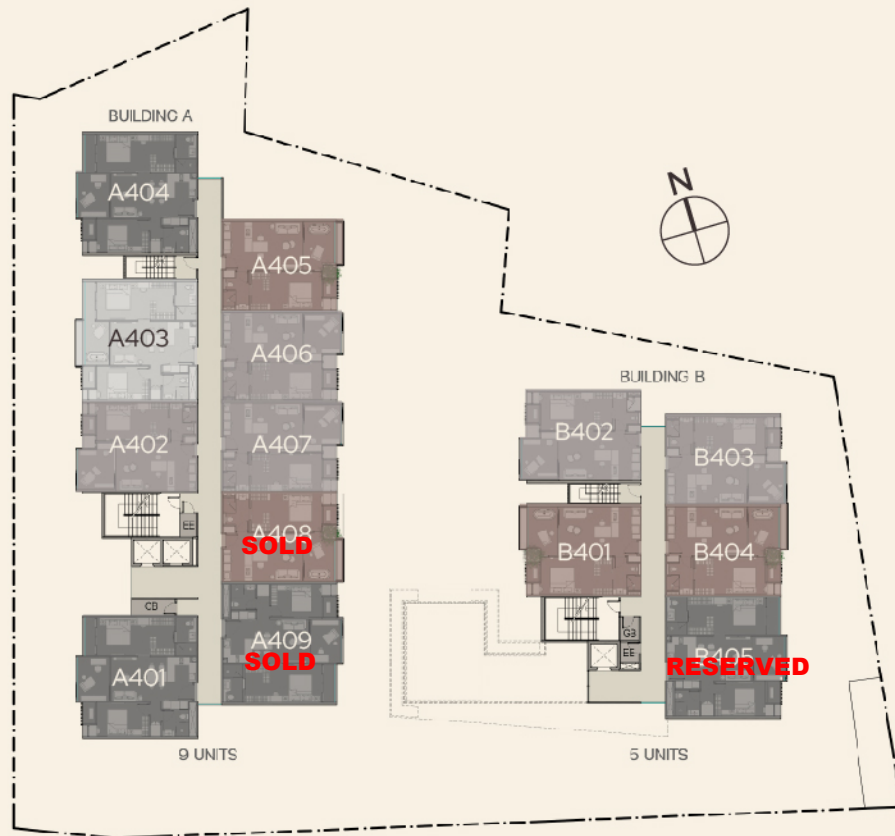
- 1 BEDROOM PLUS | 57 SQ.M.
- 2 BEDROOM PLUS | 76 SQ.M.



# FLOOR PLAN

## 4TH FLOOR

- 1 BEDROOM | 56 SQ.M.
- 1 BEDROOM PLUS | 57 SQ.M.
- 2 BEDROOM | 74 SQ.M.
- 2 BEDROOM PLUS | 76 SQ.M.



## 5TH FLOOR

- 1 BEDROOM | 56 SQ.M.
- 1 BEDROOM PLUS | 57 SQ.M.
- 2 BEDROOM | 74 SQ.M.
- 2 BEDROOM PLUS | 76 SQ.M.





# FLOOR PLAN

**TOTAL**  
94 UNITS

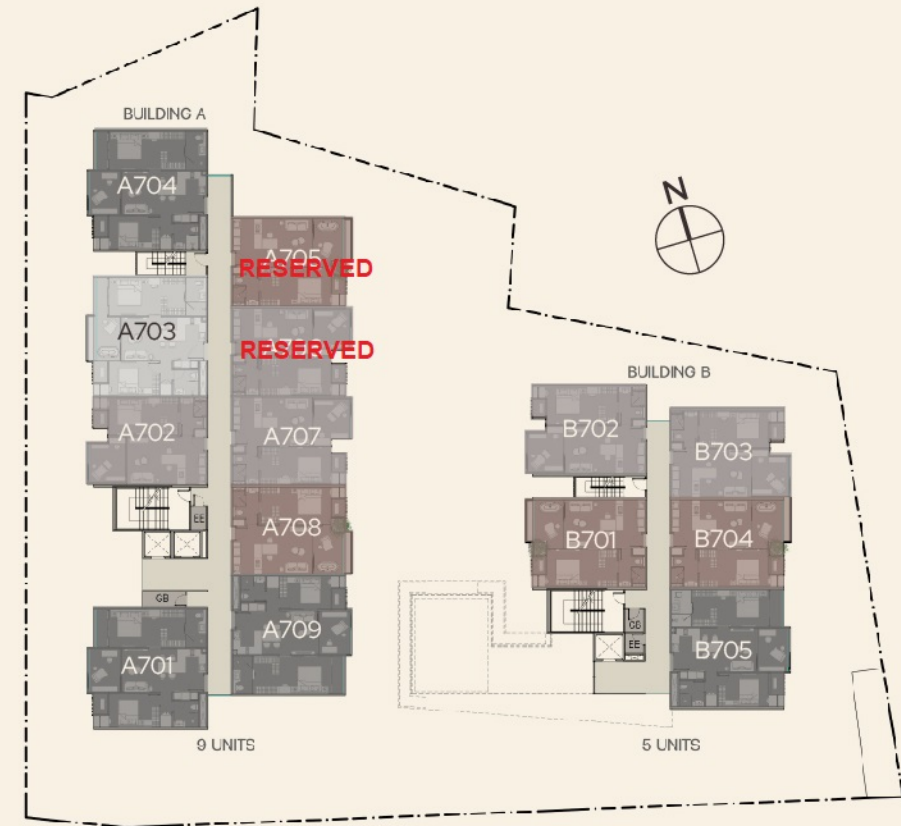
## 6TH FLOOR

- 1 BEDROOM PLUS | 56 SQ.M.
- 2 BEDROOM PLUS | 57 SQ.M.



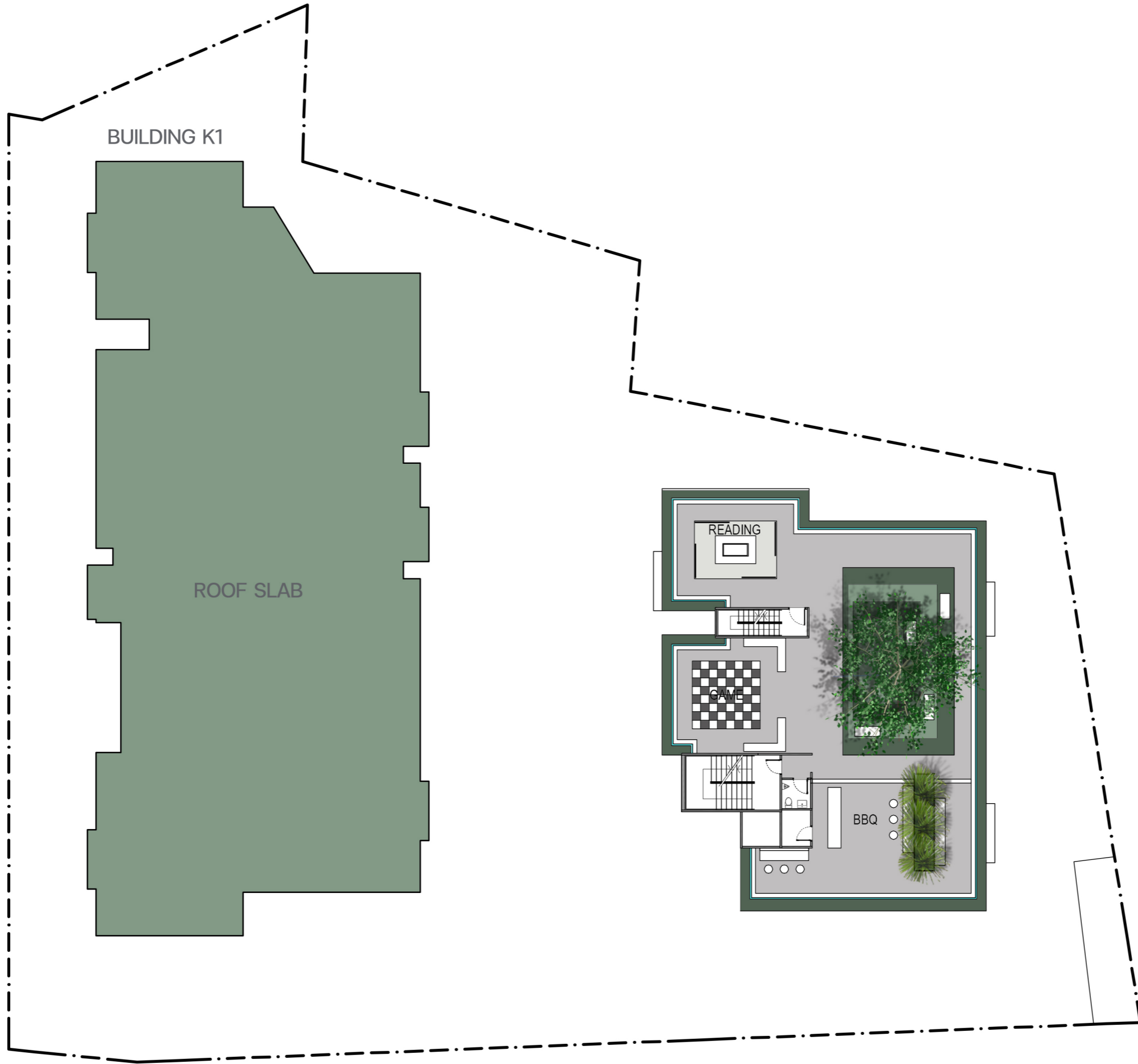
## 7TH FLOOR

- 1 BEDROOM | 56 SQ.M.
- 1 BEDROOM PLUS | 57 SQ.M.
- 2 BEDROOM | 74 SQ.M.
- 2 BEDROOM PLUS | 76 SQ.M.





BASEMENT LAY-OUT PLAN  
BUILDING K1-K2



ROOF LAY-OUT PLAN  
BUILDING K1-K2